



## Management of basal cell carcinoma of the skin using frankincense (*Boswellia sacra*) essential oil: a case report

KM Fung<sup>1,2,3</sup>, MM Suhail<sup>4</sup>, B McClendon<sup>2</sup>, CL Woolley<sup>5</sup>, DG Young<sup>5</sup>, HK Lin<sup>2\*</sup>

### Abstract

#### Introduction

Basal-cell carcinoma (BCC) is the most common form of skin cancer. Incidence of BCC is rising rapidly worldwide associated with a significant increase in health care costs. Various treatment options are available for patients diagnosed with BCC ranging from surgery, electrodesiccation, radiation, photodynamic therapy to non-invasive therapeutic approaches. Traditionally being used for aromatherapy, based on the abundance of highly volatile, aromatic compounds, frankincense essential oil prepared by hydrodistillation of *Boswellia sacra* gum resins, also possesses anti-cancer activity that can potentially provide non-surgical and non-invasive treatment option for BCC by topical application. This case report discusses the management of BCC of the skin using frankincense (*Boswellia sacra*) essential oil.

#### Case report

We present a case of a male patient, with two foci (arm and chest) of BCC, treated with local and topical application of frankincense essential oil several times a day, for a period of 20 weeks. Biopsies were performed before and after frankincense

essential oil treatment. Pathological study demonstrated total resolution of the BCC on the arm and substantial resolution in the BCC of the chest after treatment. Significant increase in apoptotic cells was observed in the residual carcinoma in the chest. Topical application of frankincense essential oil did not cause redness, swelling, erosion, crusts, vesicles, squamae, itching, tingling, or any other local or systemic side effects in this patient.

#### Conclusion

Local application of frankincense essential oil may provide a non-surgical treatment alternative, with no or minimal side effect for carcinoma *in situ*, minimally invasive carcinoma and pre-cancerous conditions such as actinic keratosis. A study with larger number of patients with both squamous-cell carcinoma and BCC is required to confirm our current findings.

#### Introduction

Skin cancer is the most prevalent form of all cancers with basal-cell carcinoma (BCC) as the most common form. It is estimated that every year more than 2 million cases of BCC are diagnosed in the United States<sup>1</sup>. In addition, because of the growing incidence of BCC worldwide<sup>2,3</sup>, it becomes an important health issue in health care costs<sup>4</sup>. Although the majority of BCC grows slowly and rarely spreads to other parts of the body<sup>5</sup>, BCC can cause significant local destruction and disfigurement by invading surrounding tissues. Patients may also experience recurrent, locally advanced, or metastatic BCC<sup>6,7</sup>. Several treatment options, including surgical interventions and non-surgical alternatives, have been

used to treat localised and advanced BCC<sup>8-10</sup>.

Aromatic gum resins, obtained from trees of the genus *Boswellia* (family Burseraceae), also known as frankincense, have been used in ayurvedic and traditional Chinese medicine to treat a variety of health-related issues. Gum resins of *Boswellia* species contain active ingredients that have potent anti-cancer activity. Frankincense extracts have been shown to suppress tumour development and induce tumour apoptosis in animal models<sup>11,12</sup>. In a human clinical study, an extract prepared from *Boswellia serrata* reduces cerebral oedema with anti-cancer activity in patients irradiated for brain tumours<sup>13</sup>. Although frankincense essential oils, obtained from hydrodistillation of gum resins, have been classically used in aromatherapy, we have demonstrated that frankincense essential oil prepared from the chemical-free extraction method possesses anti-tumour activity in suppressing proliferation and inducing apoptosis of various human cancer cell lines in cultures and in an animal model<sup>14-16</sup>.

In this case report, we present a case of local application of frankincense essential oil, prepared from *Boswellia sacra* obtained by an optimised hydrodistillation condition on two separate BCCs in one patient, leading to total resolution of one tumour and substantial reduction in tumour size in another lesion, with no detectable side effects. We suggest that frankincense essential oil can be an effective non-surgical treatment option for BCC.

#### Case report

A 56-year-old man presented to his doctor, with a skin lesion on

\* Corresponding author  
Email: hk-lin@ouhsc.edu

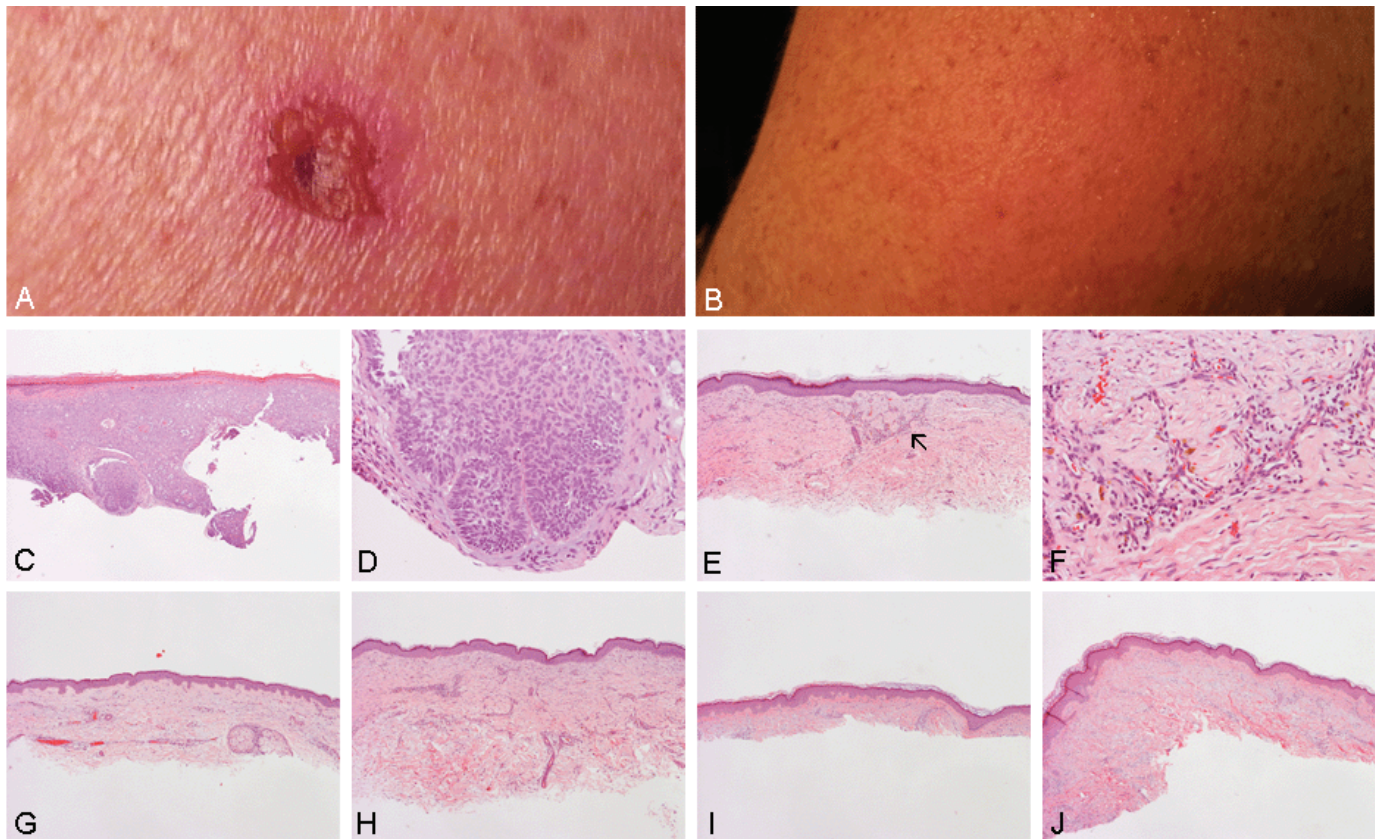
<sup>1</sup> Department of Pathology, University of Oklahoma Health Sciences Center, Oklahoma City, OK 73104, USA

<sup>2</sup> Department of Urology, University of Oklahoma Health Sciences Center, Oklahoma City, OK, 73104, USA

<sup>3</sup> Oklahoma City Veterans Medical Center, Oklahoma City, OK 73104, USA

<sup>4</sup> AYUB S42 Research, New Salalah, Dhofar State 211, Sultanate of Oman

<sup>5</sup> Young Living Essential Oils, Lehi, Utah, UT 84043, USA



**Figure 1:** Carcinoma on the arm. (A) Original lesion before treatment. (B) Image taken at three months and one week of local application of frankincense essential oil and the lesion has completely disappeared. (C) and (D) A biopsy performed before treatment, which shows BCC with nodular growth pattern. (E-J) Serial sections of the biopsy performed after treatment shows extensive scar formation, but no residual BCC. A small amount of inflammatory cells (arrow in E) is present and is illustrated in higher magnification in (F).

his left upper arm (Figure 1A) and right chest (Figure 2A). He claimed that the lesions were present from several months. These lesions were neither itchy nor painful. The patient had a history of squamous-cell carcinoma three years ago with surgical treatment. There was no family history of skin cancer or melanoma. Shaved biopsy was performed on both lesions. The lesion on the arm was diagnosed as nodular BCC (Figures 1C and 1D), and the lesion on the chest was diagnosed as BCC with superficial, nodular and infiltrative growth pattern (Figures 2D and 2E). Both specimens showed incomplete excision with residual BCC remaining in the patient. The pathology slides were reviewed by a separate board-certified anatomic

pathologist (Dr. KM Fung), who confirmed the diagnosis.

#### Management and outcome

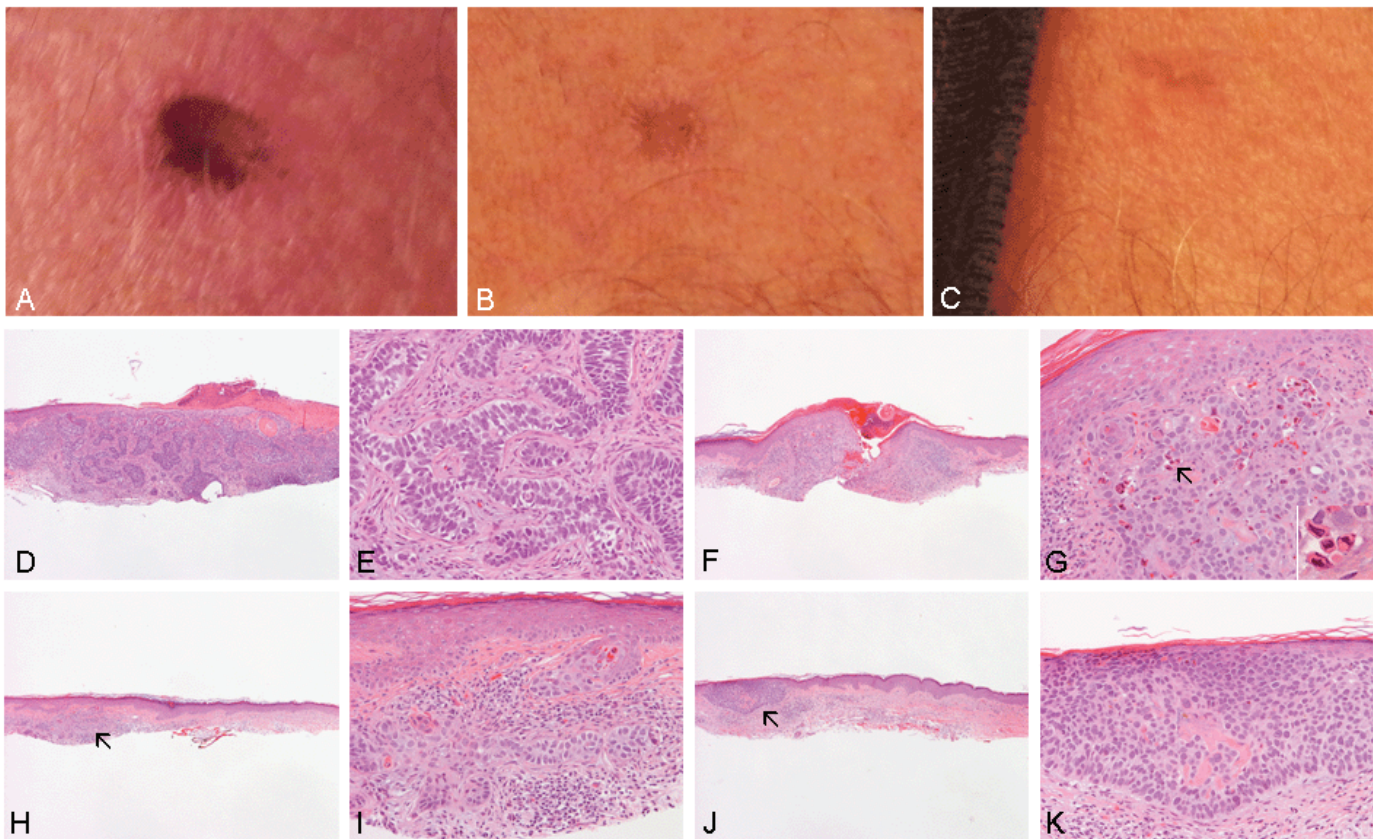
Topical application of frankincense essential oil hydrodistillate was applied several times a day to both lesions over a period of four months. At the end of the treatment, BCC on the arm had completely resolved (Figure 1B) and smooth healing of skin was observed. Biopsy material obtained from this area demonstrated only focal and mild, chronic inflammatory cell infiltration (Figures 1E and 1F) and scar formation, with no detectable residual BCC (Figures 1E-1J).

The lesion on the chest showed progressive shrinkage on gross examination during the course of treatment (Figures 2B and 2C). By the end of

the treatment, the original lesion had shrunk to about 20% of the original size (Figure 2C). Histological examination demonstrated extensive scar formation. A residual focus of BCC (Figures 2F and 2G) that measured 1.3 mm in greatest dimension on glass slides was identified. This focus was estimated to comprise approximately 10% of the volume of the biopsy material on histological slides. A substantial amount of pyknotic/apoptotic cells were observed in this post-treatment lesion (arrow and inset in Figure 2G) in comparison to the original biopsy (Figure 2E), where only scant pyknotic/apoptotic cells were seen. Although an infiltrative component was present in the original biopsy, the post-treatment biopsy was largely composed of nodular BCC.

Licensee OA Publishing London 2013. Creative Commons Attribution Licence (CC-BY)

**FOR CITATION PURPOSES:** Fung KM, Suhail MM, McClendon B, Woolley CL, Young DG, Lin HK. Management of basal cell carcinoma of the skin using frankincense (*Boswellia sacra*) essential oil: a case report. OA Alternative Medicine 2013 Jun 01;1(2):14.



**Figure 2:** Carcinoma on the chest. (A) Original lesion before treatment. (B) and (C) Images of lesion taken at three and four months after treatment, respectively, show progressively regression. (C) and (D) A biopsy taken before treatment shows BCC with an infiltrative growth pattern. (F–K) Serial sections are performed in the post-treatment lesion. Many pyknotic/apoptotic cells (arrow and inset in G) are present. Note that the residual BCC (arrows in (H) and (J)) are located adjacent to areas with extensive scarring.

### Discussion

Superficial BCC is commonly treated with topical non-surgical therapies. Conservative treatments, including photodynamic therapy and topical medications, are available for patients diagnosed with BCC. Two topical medications have been approved by the Food and Drug Administration (FDA) for treating BCC, imiquimod and fluorouracil. The 5% imiquimod cream is applied topically for six weeks or longer, with response rates between 80% and 90%; and the 5% fluorouracil cream is applied twice a day for 3–6 weeks, with response rates greater than 80%<sup>9</sup>. All treatment characteristics are significant determinants of treatment choice, and there is significant variability in the population preferences for either

of these treatments<sup>17</sup>. In addition to chance of clearance and cost associated with these treatment options, patients are often concerned about cosmetic outcomes and side effects they might experience.

Frankincense gum resins have been used as a component in anti-cancer drugs in traditional Chinese medicine. We have optimised hydro-distillation conditions to prepare frankincense essential oil from *Boswellia sacra* gum resins with potent anti-cancer activity. We observed that frankincense essential oil can possess potent growth suppression activity and apoptosis induction, specifically in cultured human bladder, breast, colon and pancreatic cancer cells versus their normal counterparts<sup>15,16</sup>. Frankin-

cense essential oil-modulated anti-tumour activity is also observed in a heterotopic xenograft human pancreatic cancer mouse model<sup>14</sup>. Our observation of the current case study using topical application of frankincense essential oil for treating BCC is in agreement with a previous news report that frankincense essential oil distilled from *Boswellia carterii* gum resins is effective in treatment of malignant melanoma in horses<sup>18</sup>. More importantly, topical application of frankincense essential oil did not cause side effects during the entire course of the treatment, as described in cases treated with other topical applications, such as imiquimod, fluorouracil and photodynamic therapy with redness, swelling, erosion, crusts, vesicles, squamae,

Licensee OA Publishing London 2013. Creative Commons Attribution Licence (CC-BY)

**FOR CITATION PURPOSES:** Fung KM, Suhail MM, McClendon B, Woolley CL, Young DG, Lin HK. Management of basal cell carcinoma of the skin using frankincense (*Boswellia sacra*) essential oil: a case report. OA Alternative Medicine 2013 Jun 01;1(2):14.

Competing interests: declared in the article. Conflict of Interests: none declared. All authors contributed to the conception, design, and preparation of the manuscript, as well as read and approved the final manuscript. All authors abide by the Association for Medical Ethics (AME) ethical rules of disclosure.



itching and tingling<sup>9</sup>. The low adverse effects of frankincense essential oil is consistent with a previous report that chemical extraction of *Boswellia serrata* gum resins has no detectable severe adverse effects after being administered to patients irradiated for brain tumours<sup>13</sup>.

The anti-cancer activity of frankincense essential oil may result from a combination of anti-proliferative and pro-apoptotic activities. Frankincense essential oil-induced growth inhibition may be due to suppressed phosphatidylinositol-3-kinase/protein kinase B (PI3K/Akt) activation and cell cycle progression with simultaneous elevated expression of growth arrest genes<sup>16</sup>. Frankincense essential oil-induced apoptosis is caspase-dependent based on the cleavages and activation of caspase-3, -8, -9 and poly (ADP-ribose) polymerase (PARP) in various human cancer cell lines<sup>14,15</sup>. BCC response to topical frankincense essential oil administration with elevated apoptosis is consistent with our observations in various experimental models.

Anti-cancer potency of frankincense essential oil depends upon methods of distillation and chemical compositions of final products. In an ongoing phase II clinical trial, a chemical extract of *Boswellia* species gum resins is studied as an adjuvant agent in patients with high-grade gliomas with emphasis on boswellic acids<sup>13</sup>. Although boswellic acids have been considered as a major component in the gum resins of *Boswellia* species, responsible for frankincense extracts-mediated anti-tumour activity<sup>19-26</sup>, we reported that compounds other than boswellic acids might be equally or more important in frankincense essential oil-modulated anti-cancer activity. With a complex chemical constituent in frankincense essential oil, many components may work synergistically to provide a potent anti-cancer activity. Although it might not be easy to isolate a group of compounds working synergistically, it is important to identify a signature compound(s) that assures consistent

biological and anti-cancer activities in the future.

Vismodegib, the first oral treatment for BCC, was recently approved for the treatment of patients with locally advanced or metastatic BCC, whose cancer was refractory to standard treatments or who were not candidates for surgery or radiation. The most common adverse effects of vismodegib include mild-to-moderate hair loss, muscle cramps, taste disturbance and weight loss. The estimated cost of one month of treatment with vismodegib is 7,500 USD<sup>10</sup>. Our preliminary results showed that the abundance of high-molecular-weight compounds is positively correlated with frankincense essential oil-induced cytotoxicity in cultured human cancer cell lines (data not shown). More importantly, this formula has significantly reduced adverse effects, including light-headedness, gastrointestinal irritation, or diarrhoea after oral administration (data not shown). The formula that contains more abundant high-molecular-weight compounds might be useful for treating advanced or metastasised BCC through oral administration.

### Conclusion

Frankincense essential oil obtained from hydrodistillation of *Boswellia* species gum resins possesses anti-cancer properties by modulating multiple signalling pathways and activating caspase-dependent apoptosis in cancer cells. With more understanding of biological compounds and mechanistic actions, frankincense essential oil can be a safe and effective alternative therapeutic agent for treating BCC through topical administration.

### Abbreviation list

BCC, basal-cell carcinoma.

### Consent

Written informed consent was obtained from the patient for publication of this case report and accom-

panying images. A copy of the written consent is available for review by the Editor-in-Chief of this journal.

### Competing interests

CW and GY are affiliated with Young Living Essential Oils. The rest of the authors declared that they have no competing interests.

### References

1. Jackson BA. Nonmelanoma skin cancer in persons of color. *Semin Cutan Med Surg.* 2009 Jun;28(2):93-5.
2. Sng J, Koh D, Siong WC, Choo TB. Skin cancer trends among Asians living in Singapore from 1968 to 2006. *J Am Acad Dermatol.* 2009 Sep;61(3):426-32.
3. Ohtsuka H, Nagamatsu S. Changing trends in the number of deaths from nonmelanoma skin cancer in Japan, 1955-2000. *Dermatology.* 2005 Mar;210(3):206-10.
4. Cakir BÖ, Adamson P, Cingi C. Epidemiology and economic burden of nonmelanoma skin cancer. *Facial Plast Surg Clin North Am.* 2012 Nov;20(4):419-22.
5. Kim RH, Armstrong AW. Nonmelanoma skin cancer. *Dermatol Clin.* 2012 Jan;30(1):125-39, ix.
6. Bozikov K, Taggart I. Metastatic basal cell carcinoma: is infiltrative/morpheaform subtype a risk factor? *Eur J Dermatol.* 2006 Nov-Dec;16(6):691-2.
7. Motegi S, Tamura A, Tanaka S, Nagai K, Ishikawa O. Aggressive basal cell carcinoma with pulmonary metastases. *Eur J Dermatol.* 2006 Sep-Oct;16(5):585-6.
8. Matei C, Tampa M, Poteca T, Panea-Paunica G, Georgescu SR, Ion RM, et al. Photodynamic therapy in the treatment of basal cell carcinoma. *J Med Life.* 2013 Apr;6(1):50-4.
9. Arits AH, Mosterd K, Essers BA, Spoorenberg E, Sommer A, De Rooij MJ, et al. Photodynamic therapy versus topical imiquimod versus topical fluorouracil for treatment of superficial basal-cell carcinoma: a single blind, non-inferiority, randomised controlled trial. *Lancet Oncol.* 2013 Jun;14(7):647-54.
10. Poggi L, Kolesar JM. Vismodegib for the treatment of basal cell skin cancer. *Am J Health Syst Pharm.* 2013 Jun;70(12):1033-8.
11. Huang MT, Badmaev V, Ding Y, Li Y, Xie JG, Ho CT. Anti-tumor and anti-carcinogenic activities of triterpenoid, beta-boswellic acid. *Biofactors.* 2000 Mar;13(1-4):225-30.



12. Winking M, Sarikaya S, Rahmanian A, Jödicke A, Böker DK. Boswellic acids inhibit glioma growth: a new treatment option? *J Neurooncol*. 2000 Jul;46(2):97–103.
13. Kirste S, Treier M, Wehrle SJ, Becker G, Abdel-Tawab M, Gerbeth K, et al. *Boswellia serrata* acts on cerebral edema in patients irradiated for brain tumors: a prospective, randomized, placebo-controlled, double-blind pilot trial. *Cancer*. 2011 Aug;117(16):3788–95.
14. Ni X, Suhail MM, Yang Q, Cao A, Fung KM, Postier RG, et al. Frankincense essential oil prepared from hydrodistillation of *Boswellia sacra* gum resins induces human pancreatic cancer cell death in cultures and in a xenograft murine model. *BMC Complement Altern Med*. 2012 Dec;12(1):253.
15. Suhail MM, Wu W, Cao A, Mondalek FG, Fung KM, Shih PT, et al. *Boswellia sacra* essential oil induces tumor cell-specific apoptosis and suppresses tumor aggressiveness in cultured human breast cancer cells. *BMC Complement Altern Med*. 2011 Dec;11(1):129.
16. Frank MB, Yang Q, Osban J, Azzarello JT, Saban MR, Saban R, et al. Frankincense oil derived from *Boswellia carteri* induces tumor cell specific cytotoxicity. *BMC Complement Altern Med*. 2009 Mar;9(1):6.
17. Tinelli M, Ozolins M, Bath-Hextall F, Williams HC. What determines patient preferences for treating low risk basal cell carcinoma when comparing surgery vs imiquimod? A discrete choice experiment survey from the SINS trial. *BMC Dermatol*. 2012 Oct;12(1):19.
18. Service TCN. Frankincense shows promise in fighting skin cancer. *Fox News*; 2006.
19. Akihisa T, Tabata K, Banno N, Tokuda H, Nishimura R, Nakamura Y, et al. Cancer chemopreventive effects and cytotoxic activities of the triterpene acids from the resin of *Boswellia carteri*. *Biol Pharm Bull*. 2006 Sep;29(9):1976–9.
20. Park YS, Lee JH, Bondar J, Harwalkar JA, Safayhi H, Golubic M. Cytotoxic action of acetyl-11-keto-b-boswellic acid (AKBA) on meningioma cells. *Planta Med*. 2002 May;68(5):397–401.
21. Xia L, Chen D, Han R, Fang Q, Waxman S, Jing Y. Boswellic acid acetate induces apoptosis through caspase-mediated pathways in myeloid leukemia cells. *Mol Cancer Ther*. 2005 Mar;4(3):381–8.
22. Liu JJ, Nilsson A, Oredsson S, Badmaev V, Duan RD. Keto- and acetyl-keto-boswellic acids inhibit proliferation and induce apoptosis in Hep G2 cells via a caspase-8 dependent pathway. *Int J Mol Med*. 2002 Oct;10(4):501–5.
23. Zhao W, Entschladen F, Liu H, Niggemann B, Fang Q, Zaenker KS, et al. Boswellic acid acetate induces differentiation and apoptosis in highly metastatic melanoma and fibrosarcoma cells. *Cancer Detect Prev*. 2003 Feb;27(1):67–75.
24. Liu JJ, Huang B, Hooi SC. Acetyl-keto-b-boswellic acid inhibits cellular proliferation through a p21-dependent pathway in colon cancer cells. *Br J Pharmacol*. 2006 Aug;148(8):1099–107.
25. Pang X, Yi Z, Zhang X, Sung B, Qu W, Lian X, et al. Acetyl-11-keto-b-boswellic acid inhibits prostate tumor growth by suppressing vascular endothelial growth factor receptor 2-mediated angiogenesis. *Cancer Res*. 2009 Jul;69(14):5893–900.
26. Park B, Prasad S, Yadav V, Sung B, Aggarwal BB. Boswellic acid suppresses growth and metastasis of human pancreatic tumors in an orthotopic nude mouse model through modulation of multiple targets. *PLoS One*. 2011 Nov;6(10):e26943.

Competing interests: declared in the article. Conflict of Interests: none declared.  
 All authors contributed to the conception, design, and preparation of the manuscript, as well as read and approved the final manuscript.  
 All authors abide by the Association for Medical Ethics (AME) ethical rules of disclosure.